

## 6 コホート観察結果

コホートとは、1年間あるいは四半期などの時期を定めて、この間に治療を開始した患者の集団を指します。このコホート集団を一定期間追跡し、治療終了時点での成績を観察します。世界的に治療サービスの評価に広く用いられており、WHOでは、①治癒、②治療完了、③死亡、④失敗、⑤脱落、⑥転出、⑦評価できず、に分類しています。①+②を「治療成功」とよびWHOは85%達成を目標にしています。

2007年からの結核登録者情報システムでは、前年登録の肺結核患者を対象に入力された情報から自動判定し、15のコードに分類しています。なお、「結核の統計」など一般的には15区分をまとめ、①治癒、②治療完了、③死亡、④失敗、⑤脱落、⑥転出、⑦12か月を越える治療、⑧判定不能、の8区分で表しています。

### ■治療経過の判定基準

判定区分	判 定 基 準
①治癒	1. 治癒 1年以内で指示中止（完遂）の月を含む過去3ヶ月と
②完了	2. 完了 それ以前の2回菌陰性を確認→治癒、どちらか1回→完了 3. 完了※ 菌陽性結果後菌陰性を確認せず指示中止（完遂）
③死亡	4. 死亡 1年以内で治療完遂前に死亡
④失敗	5. 失敗 5月目以降に培養陽性が1度でもあり
⑤脱落	6. 脱落1 連続60日以上あるいは2月以上中断 7. 脱落2 指示中止（完遂）だが180日未満あるいは270日未満の治療
⑥転出	8. 転出 1年以内で治療完遂前に転出
⑦12か月を越える治療	9. 12か月越治療1 標準治療が途中から変更となり長期化の可能性 10. 12か月越治療2 その他の理由で長期化
⑧判定不能	11. 判定不能1 治療開始時治療なし（治療開始前死亡、培検診断等）能 12. 判定不能2 治療開始時治療内容不明（入力手技の誤り、未把握等） 13. 判定不能3 治療開始時標準治療でない 14. 判定不能4 1年以内で治療完遂したが途中でINHあるいはRFP中止 15. 判定不能5 治療開始後まもないため判定の情報不十分。その他

前年新登録肺結核患者数－登録時総合患者分類コード、コホート観察、保健所別

(人)

		肺 結 核 活 動 性					
		総 数	喀 痰 塗 抹 陽 性			その他の結核菌陽性	菌陰性・その他
			総数	初回治療	再治療		
総 数	総 数	180 (100.0%)	102 (100.0%)	98 (100.0%)	4 (100.0%)	58 (100.0%)	20 (100.0%)
	治 癒 (%)	10 (5.6%)	6 (5.9%)	6 (6.1%)	0 (0.0%)	3 (5.2%)	1 (5.0%)
	治療完了 (%)	64 (35.6%)	36 (35.3%)	34 (34.7%)	2 (50.0%)	20 (34.5%)	8 (40.0%)
	死 亡 (%)	40 (22.2%)	24 (23.5%)	24 (24.5%)	0 (0.0%)	13 (22.4%)	3 (15.0%)
	治療失敗 (%)	1 (0.6%)	1 (1.0%)	1 (1.0%)	0 (0.0%)	0 (0.0%)	0 (0.0%)
	脱落中断 (%)	22 (12.2%)	11 (10.8%)	11 (11.2%)	0 (0.0%)	6 (10.3%)	5 (25.0%)
	転 出 (%)	3 (1.7%)	1 (1.0%)	1 (1.0%)	0 (0.0%)	1 (1.7%)	1 (5.0%)
	12か月を越える治療 (%)	10 (5.6%)	6 (5.9%)	6 (6.1%)	0 (0.0%)	4 (6.9%)	0 (0.0%)
	判定不能 (%)	30 (16.7%)	17 (16.7%)	15 (15.3%)	2 (50.0%)	11 (19.0%)	2 (10.0%)
熊 本 市	総 数	70 (100.0%)	40 (100.0%)	39 (100.0%)	1 (100.0%)	22 (100.0%)	8 (100.0%)
	治 癒 (%)	0 (0.0%)	0 (0.0%)	0 (0.0%)	0 (0.0%)	0 (0.0%)	0 (0.0%)
	治療完了 (%)	31 (44.3%)	22 (55.0%)	22 (56.4%)	0 (0.0%)	6 (27.3%)	3 (37.5%)
	死 亡 (%)	15 (21.4%)	8 (20.0%)	8 (20.5%)	0 (0.0%)	6 (27.3%)	1 (12.5%)
	治療失敗 (%)	1 (1.4%)	1 (2.5%)	1 (2.6%)	0 (0.0%)	0 (0.0%)	0 (0.0%)
	脱落中断 (%)	9 (12.9%)	3 (7.5%)	3 (7.7%)	0 (0.0%)	3 (13.6%)	3 (37.5%)
	転 出 (%)	0 (0.0%)	0 (0.0%)	0 (0.0%)	0 (0.0%)	0 (0.0%)	0 (0.0%)
	12か月を越える治療 (%)	2 (2.9%)	1 (2.5%)	1 (2.6%)	0 (0.0%)	1 (4.5%)	0 (0.0%)
	判定不能 (%)	12 (17.1%)	5 (12.5%)	4 (10.3%)	1 (100.0%)	6 (27.3%)	1 (12.5%)
有 明	総 数	21 (100.0%)	12 (100.0%)	11 (100.0%)	1 (100.0%)	6 (100.0%)	3 (100.0%)
	治 癒 (%)	0 (0.0%)	0 (0.0%)	0 (0.0%)	0 (0.0%)	0 (0.0%)	0 (0.0%)
	治療完了 (%)	11 (52.4%)	5 (41.7%)	4 (36.4%)	1 (100.0%)	4 (66.7%)	2 (66.7%)
	死 亡 (%)	3 (14.3%)	2 (16.7%)	2 (18.2%)	0 (0.0%)	1 (16.7%)	0 (0.0%)
	治療失敗 (%)	0 (0.0%)	0 (0.0%)	0 (0.0%)	0 (0.0%)	0 (0.0%)	0 (0.0%)
	脱落中断 (%)	2 (9.5%)	1 (8.3%)	1 (9.1%)	0 (0.0%)	1 (16.7%)	0 (0.0%)
	転 出 (%)	0 (0.0%)	0 (0.0%)	0 (0.0%)	0 (0.0%)	0 (0.0%)	0 (0.0%)
	12か月を越える治療 (%)	2 (9.5%)	2 (16.7%)	2 (18.2%)	0 (0.0%)	0 (0.0%)	0 (0.0%)
	判定不能 (%)	3 (14.3%)	2 (16.7%)	2 (18.2%)	0 (0.0%)	0 (0.0%)	1 (33.3%)

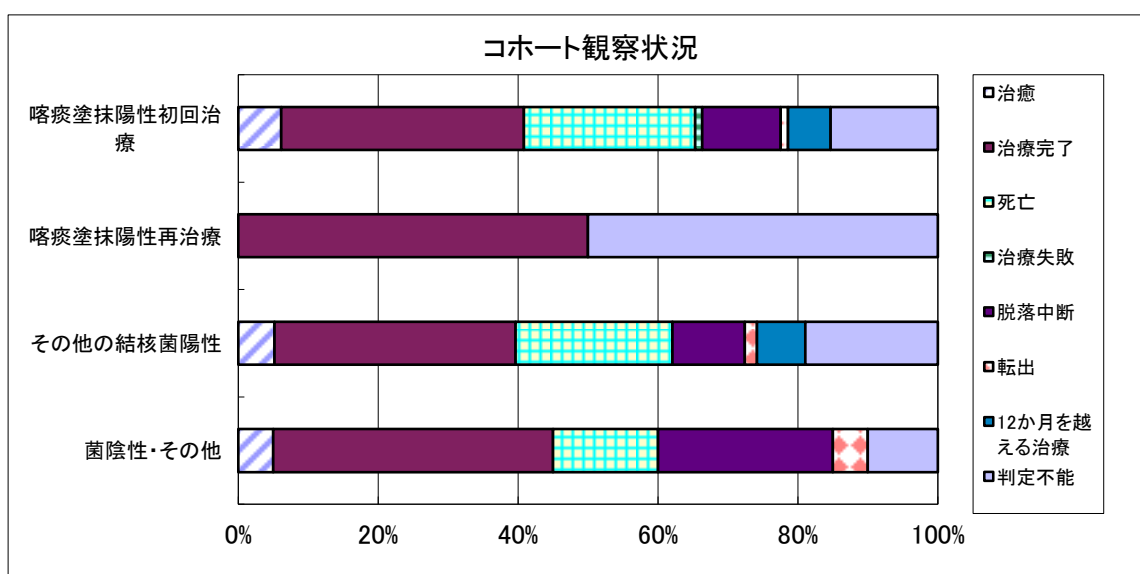
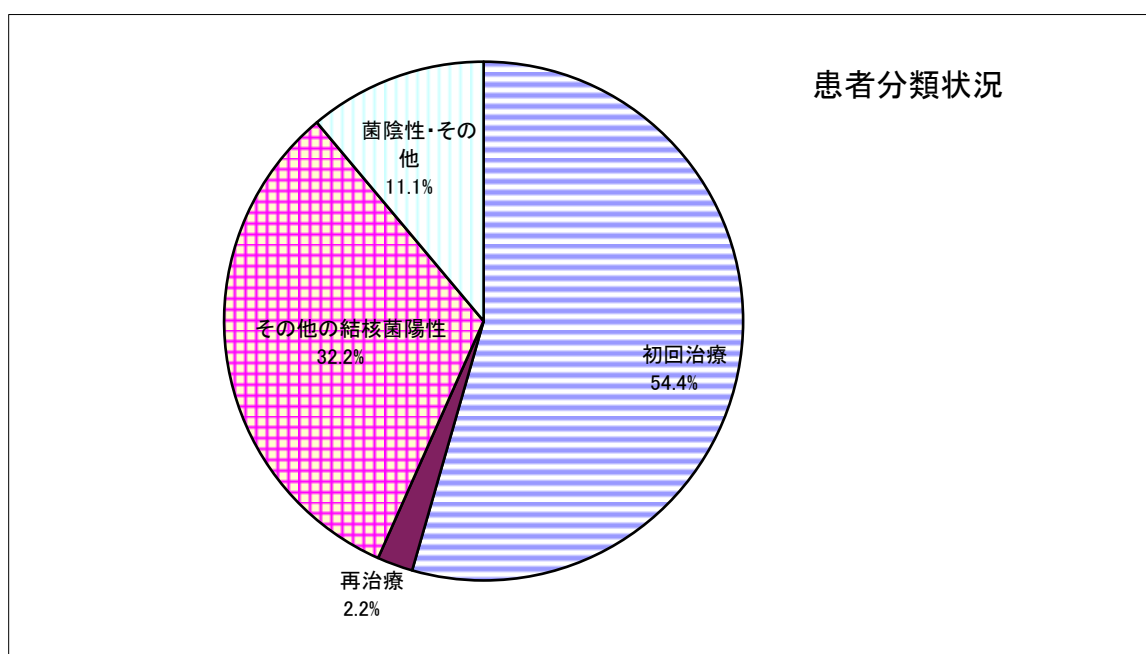
		肺 結 核 活 動 性					
		総 数	喀 痰 塗 抹 陽 性			その他の結核菌陽性	菌陰性・その他
			総数	初回治療	再治療		
山 鹿	総 数	7 (100.0%)	3 (100.0%)	3 (100.0%)	0 -	3 (100.0%)	1 (100.0%)
	治 癒 (%)	0 (0.0%)	0 (0.0%)	0 (0.0%)	0 -	0 (0.0%)	0 (0.0%)
	治療完了 (%)	0 (0.0%)	0 (0.0%)	0 (0.0%)	0 -	0 (0.0%)	0 (0.0%)
	死 亡 (%)	1 (14.3%)	1 (33.3%)	1 (33.3%)	0 -	0 (0.0%)	0 (0.0%)
	治療失敗 (%)	0 (0.0%)	0 (0.0%)	0 (0.0%)	0 -	0 (0.0%)	0 (0.0%)
	脱落中断 (%)	3 (42.9%)	1 (33.3%)	1 (33.3%)	0 -	1 (33.3%)	1 (100.0%)
	転 出 (%)	0 (0.0%)	0 (0.0%)	0 (0.0%)	0 -	0 (0.0%)	0 (0.0%)
	12か月を越える治療 (%)	1 (14.3%)	1 (33.3%)	1 (33.3%)	0 -	0 (0.0%)	0 (0.0%)
	判定不能 (%)	2 (28.6%)	0 (0.0%)	0 (0.0%)	0 -	2 (66.7%)	0 (0.0%)
菊 池	総 数	13 (100.0%)	9 (100.0%)	9 (100.0%)	0 -	3 (100.0%)	1 (100.0%)
	治 癒 (%)	0 (0.0%)	0 (0.0%)	0 (0.0%)	0 -	0 (0.0%)	0 (0.0%)
	治療完了 (%)	3 (23.1%)	1 (11.1%)	1 (11.1%)	0 -	1 (33.3%)	1 (100.0%)
	死 亡 (%)	5 (38.5%)	5 (55.6%)	5 (55.6%)	0 -	0 (0.0%)	0 (0.0%)
	治療失敗 (%)	0 (0.0%)	0 (0.0%)	0 (0.0%)	0 -	0 (0.0%)	0 (0.0%)
	脱落中断 (%)	2 (15.4%)	2 (22.2%)	2 (22.2%)	0 -	0 (0.0%)	0 (0.0%)
	転 出 (%)	0 (0.0%)	0 (0.0%)	0 (0.0%)	0 -	0 (0.0%)	0 (0.0%)
	12か月を越える治療 (%)	0 (0.0%)	0 (0.0%)	0 (0.0%)	0 -	0 (0.0%)	0 (0.0%)
	判定不能 (%)	3 (23.1%)	1 (11.1%)	1 (11.1%)	0 -	2 (66.7%)	0 (0.0%)
阿 蘇	総 数	9 (100.0%)	2 (100.0%)	1 (100.0%)	1 (100.0%)	6 (100.0%)	1 (100.0%)
	治 癒 (%)	1 (11.1%)	0 (0.0%)	0 (0.0%)	0 (0.0%)	1 (16.7%)	0 (0.0%)
	治療完了 (%)	4 (44.4%)	1 (50.0%)	1 (100.0%)	0 (0.0%)	2 (33.3%)	1 (100.0%)
	死 亡 (%)	1 (11.1%)	0 (0.0%)	0 (0.0%)	0 (0.0%)	1 (16.7%)	0 (0.0%)
	治療失敗 (%)	0 (0.0%)	0 (0.0%)	0 (0.0%)	0 (0.0%)	0 (0.0%)	0 (0.0%)
	脱落中断 (%)	0 (0.0%)	0 (0.0%)	0 (0.0%)	0 (0.0%)	0 (0.0%)	0 (0.0%)
	転 出 (%)	1 (11.1%)	0 (0.0%)	0 (0.0%)	0 (0.0%)	1 (16.7%)	0 (0.0%)
	12か月を越える治療 (%)	0 (0.0%)	0 (0.0%)	0 (0.0%)	0 (0.0%)	0 (0.0%)	0 (0.0%)
	判定不能 (%)	2 (22.2%)	1 (50.0%)	0 (0.0%)	1 (100.0%)	1 (16.7%)	0 (0.0%)

		肺 結 核 活 動 性					
		総 数	喀 痰 塗 抹 陽 性			その他の結核菌陽性	菌陰性・その他
			総数	初回治療	再治療		
御 船	総 数	8 (100.0%)	5 (100.0%)	5 (100.0%)	0 -	2 (100.0%)	1 (100.0%)
	治 癒 (%)	2 (25.0%)	1 (20.0%)	1 (20.0%)	0 -	1 (50.0%)	0 (0.0%)
	治療完了 (%)	2 (25.0%)	1 (20.0%)	1 (20.0%)	0 -	1 (50.0%)	0 (0.0%)
	死 亡 (%)	1 (12.5%)	1 (20.0%)	1 (20.0%)	0 -	0 (0.0%)	0 (0.0%)
	治療失敗 (%)	0 (0.0%)	0 (0.0%)	0 (0.0%)	0 -	0 (0.0%)	0 (0.0%)
	脱落中断 (%)	1 (12.5%)	1 (20.0%)	1 (20.0%)	0 -	0 (0.0%)	0 (0.0%)
	転 出 (%)	1 (12.5%)	0 (0.0%)	0 (0.0%)	0 -	0 (0.0%)	1 (100.0%)
	12か月を越える治療 (%)	0 (0.0%)	0 (0.0%)	0 (0.0%)	0 -	0 (0.0%)	0 (0.0%)
	判定不能 (%)	1 (12.5%)	1 (20.0%)	1 (20.0%)	0 -	0 (0.0%)	0 (0.0%)
宇 城	総 数	8 (100.0%)	4 (100.0%)	4 (100.0%)	0 -	3 (100.0%)	1 (100.0%)
	治 癒 (%)	0 (0.0%)	0 (0.0%)	0 (0.0%)	0 -	0 (0.0%)	0 (0.0%)
	治療完了 (%)	2 (25.0%)	0 (0.0%)	0 (0.0%)	0 -	1 (33.3%)	1 (100.0%)
	死 亡 (%)	2 (25.0%)	1 (25.0%)	1 (25.0%)	0 -	1 (33.3%)	0 (0.0%)
	治療失敗 (%)	0 (0.0%)	0 (0.0%)	0 (0.0%)	0 -	0 (0.0%)	0 (0.0%)
	脱落中断 (%)	0 (0.0%)	0 (0.0%)	0 (0.0%)	0 -	0 (0.0%)	0 (0.0%)
	転 出 (%)	0 (0.0%)	0 (0.0%)	0 (0.0%)	0 -	0 (0.0%)	0 (0.0%)
	12か月を越える治療 (%)	1 (12.5%)	0 (0.0%)	0 (0.0%)	0 -	1 (33.3%)	0 (0.0%)
	判定不能 (%)	3 (37.5%)	3 (75.0%)	3 (75.0%)	0 -	0 (0.0%)	0 (0.0%)
八 代	総 数	14 (100.0%)	7 (100.0%)	6 (100.0%)	1 (100.0%)	6 (100.0%)	1 (100.0%)
	治 癒 (%)	0 (0.0%)	0 (0.0%)	0 (0.0%)	0 (0.0%)	0 (0.0%)	0 (0.0%)
	治療完了 (%)	5 (35.7%)	3 (42.9%)	2 (33.3%)	1 (100.0%)	2 (33.3%)	0 (0.0%)
	死 亡 (%)	5 (35.7%)	2 (28.6%)	2 (33.3%)	0 (0.0%)	3 (50.0%)	0 (0.0%)
	治療失敗 (%)	0 (0.0%)	0 (0.0%)	0 (0.0%)	0 (0.0%)	0 (0.0%)	0 (0.0%)
	脱落中断 (%)	3 (21.4%)	1 (14.3%)	1 (16.7%)	0 (0.0%)	1 (16.7%)	1 (100.0%)
	転 出 (%)	0 (0.0%)	0 (0.0%)	0 (0.0%)	0 (0.0%)	0 (0.0%)	0 (0.0%)
	12か月を越える治療 (%)	0 (0.0%)	0 (0.0%)	0 (0.0%)	0 (0.0%)	0 (0.0%)	0 (0.0%)
	判定不能 (%)	1 (7.1%)	1 (14.3%)	1 (16.7%)	0 (0.0%)	0 (0.0%)	0 (0.0%)

		肺 結 核 活 動 性					
		総 数	喀 痰 塗 抹 陽 性			その他の結核菌陽性	菌陰性・その他
			総数	初回治療	再治療		
水 俣	総 数	6 (100.0%)	4 (100.0%)	4 (100.0%)	0 -	1 (100.0%)	1 (100.0%)
	治 癒 (%)	0 (0.0%)	0 (0.0%)	0 (0.0%)	0 -	0 (0.0%)	0 (0.0%)
	治療完了 (%)	1 (16.7%)	1 (25.0%)	1 (25.0%)	0 -	0 (0.0%)	0 (0.0%)
	死 亡 (%)	1 (16.7%)	0 (0.0%)	0 (0.0%)	0 -	0 (0.0%)	1 (100.0%)
	治療失敗 (%)	0 (0.0%)	0 (0.0%)	0 (0.0%)	0 -	0 (0.0%)	0 (0.0%)
	脱落中断 (%)	1 (16.7%)	1 (25.0%)	1 (25.0%)	0 -	0 (0.0%)	0 (0.0%)
	転 出 (%)	1 (16.7%)	1 (25.0%)	1 (25.0%)	0 -	0 (0.0%)	0 (0.0%)
	12か月を越える治療 (%)	1 (16.7%)	0 (0.0%)	0 (0.0%)	0 -	1 (100.0%)	0 (0.0%)
	判定不能 (%)	1 (16.7%)	1 (25.0%)	1 (25.0%)	0 -	0 (0.0%)	0 (0.0%)
人 吉	総 数	7 (100.0%)	6 (100.0%)	6 (100.0%)	0 -	1 (100.0%)	0 -
	治 癒 (%)	0 (0.0%)	0 (0.0%)	0 (0.0%)	0 -	0 (0.0%)	0 -
	治療完了 (%)	1 (14.3%)	1 (16.7%)	1 (16.7%)	0 -	0 (0.0%)	0 -
	死 亡 (%)	2 (28.6%)	2 (33.3%)	2 (33.3%)	0 -	0 (0.0%)	0 -
	治療失敗 (%)	0 (0.0%)	0 (0.0%)	0 (0.0%)	0 -	0 (0.0%)	0 -
	脱落中断 (%)	1 (14.3%)	1 (16.7%)	1 (16.7%)	0 -	0 (0.0%)	0 -
	転 出 (%)	0 (0.0%)	0 (0.0%)	0 (0.0%)	0 -	0 (0.0%)	0 -
	12か月を越える治療 (%)	1 (14.3%)	0 (0.0%)	0 (0.0%)	0 -	1 (100.0%)	0 -
	判定不能 (%)	2 (28.6%)	2 (33.3%)	2 (33.3%)	0 -	0 (0.0%)	0 -
天 草	総 数	17 (100.0%)	10 (100.0%)	10 (100.0%)	0 -	5 (100.0%)	2 (100.0%)
	治 癒 (%)	7 (41.2%)	5 (50.0%)	5 (50.0%)	0 -	1 (20.0%)	1 (50.0%)
	治療完了 (%)	4 (23.5%)	1 (10.0%)	1 (10.0%)	0 -	3 (60.0%)	0 (0.0%)
	死 亡 (%)	4 (23.5%)	2 (20.0%)	2 (20.0%)	0 -	1 (20.0%)	1 (50.0%)
	治療失敗 (%)	0 (0.0%)	0 (0.0%)	0 (0.0%)	0 -	0 (0.0%)	0 (0.0%)
	脱落中断 (%)	0 (0.0%)	0 (0.0%)	0 (0.0%)	0 -	0 (0.0%)	0 (0.0%)
	転 出 (%)	0 (0.0%)	0 (0.0%)	0 (0.0%)	0 -	0 (0.0%)	0 (0.0%)
	12か月を越える治療 (%)	2 (11.8%)	2 (20.0%)	2 (20.0%)	0 -	0 (0.0%)	0 (0.0%)
	判定不能 (%)	0 (0.0%)	0 (0.0%)	0 (0.0%)	0 -	0 (0.0%)	0 (0.0%)

前年新登録肺結核患者数—登録時総合患者分類コード、コホート観察

	総数	* 喀痰塗抹陽性			その他の結核菌陽性	菌陰性・その他
		総数	初回治療	再治療		
総数	180	102	98	4	58	20
治癒	10	6	6	0	3	1
治療完了	64	36	34	2	20	8
死亡	40	24	24	0	13	3
治療失敗	1	1	1	0	0	0
脱落中断	22	11	11	0	6	5
転出	3	1	1	0	1	1
12か月を越える治療	10	6	6	0	4	0
判定不能	30	17	15	2	11	2



## 保健所別治療成績

	総数	熊本市	有明	山鹿	菊池	阿蘇	御船	宇城	八代	水俣	人吉	天草
総数	180	70	21	7	13	9	8	8	14	6	7	17
治療	10	0	0	0	0	1	2	0	0	0	0	7
治療完了	64	31	11	0	3	4	2	2	5	1	1	4
死亡	40	15	3	1	5	1	1	2	5	1	2	4
治療失敗	1	1	0	0	0	0	0	0	0	0	0	0
脱落中断	22	9	2	3	2	0	1	0	3	1	1	0
転出	3	0	0	0	0	1	1	0	0	1	0	0
12か月を越える治療	10	2	2	1	0	0	0	1	0	1	1	2
判定不能	30	12	3	2	3	2	1	3	1	1	2	0

